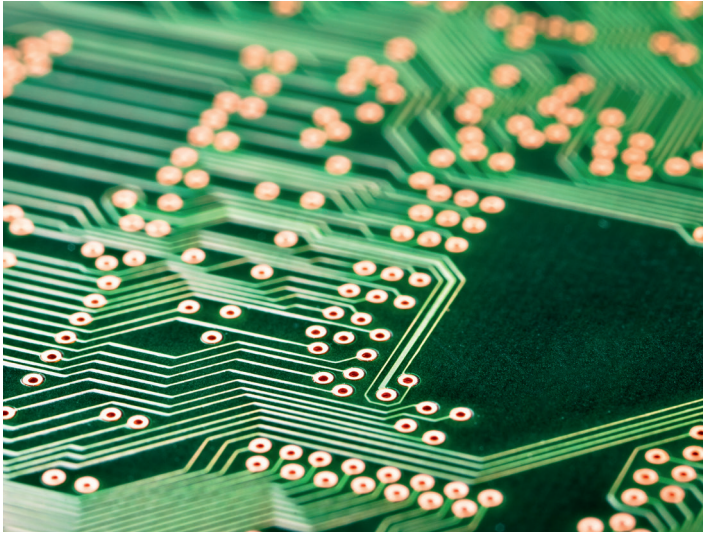


RZ7

RZ7-NT24 (BT), RZ7-NT24 (FA)



Product description

RZ7-BT

Device (power supply), in accordance with the general type approval (aBG) for the installation of the hold-open system „RZ7-BT“ for fire and smoke protection closures according to aBG Z-6.500-2613.

RZ7-FA

Device (energy supply), in accordance with the general type approval (aBG) for the installation of the hold-open system „RZ7-FA“ for fire and smoke protection closures according to aBG Z-6.500-2612.

Product description	Power supply for release unit („RZ7 FAA“ with „RZ7 NT24“ or „RZ7 NT24-BMZ2“, „RZ7 NT24-BMZ2“ with „RZ7 NT24“ and „RZ4“)
Rated voltage	195,5...253 V AC
Mains frequency	47...63Hz
Connected load	200 VA AC
Inrush current	max. 10 A
Control voltage	24 V DC
Output current	3,5 A DC
Battery	2 x 12 V 7,2 Ah
Display	Foil with LED displays
Housing	Bopla CombiCard 6000
Protection class	IP66
Housing dimensions (W x H x D)	226,5 x 236,7 x 223,76 mm
Housing (colour)	similar to RAL 7038
Ambient temperature range	0 °C ... + 40 °C

Note:

If the RZ7-NT24 (BT) or the RZ7-NT24 (FA) is not installed in the effective range of the system's own detectors, e.g. equipment room or false ceiling, an additional detector is required. Design for installation of the hold-open system according to general design approval aBG Z-6.500-2613 (BT), aBG Z-6.500-2612 (FA). Other housing designs, e.g. cabinet installation, are possible; additional information on this is contained in the operating instructions.